

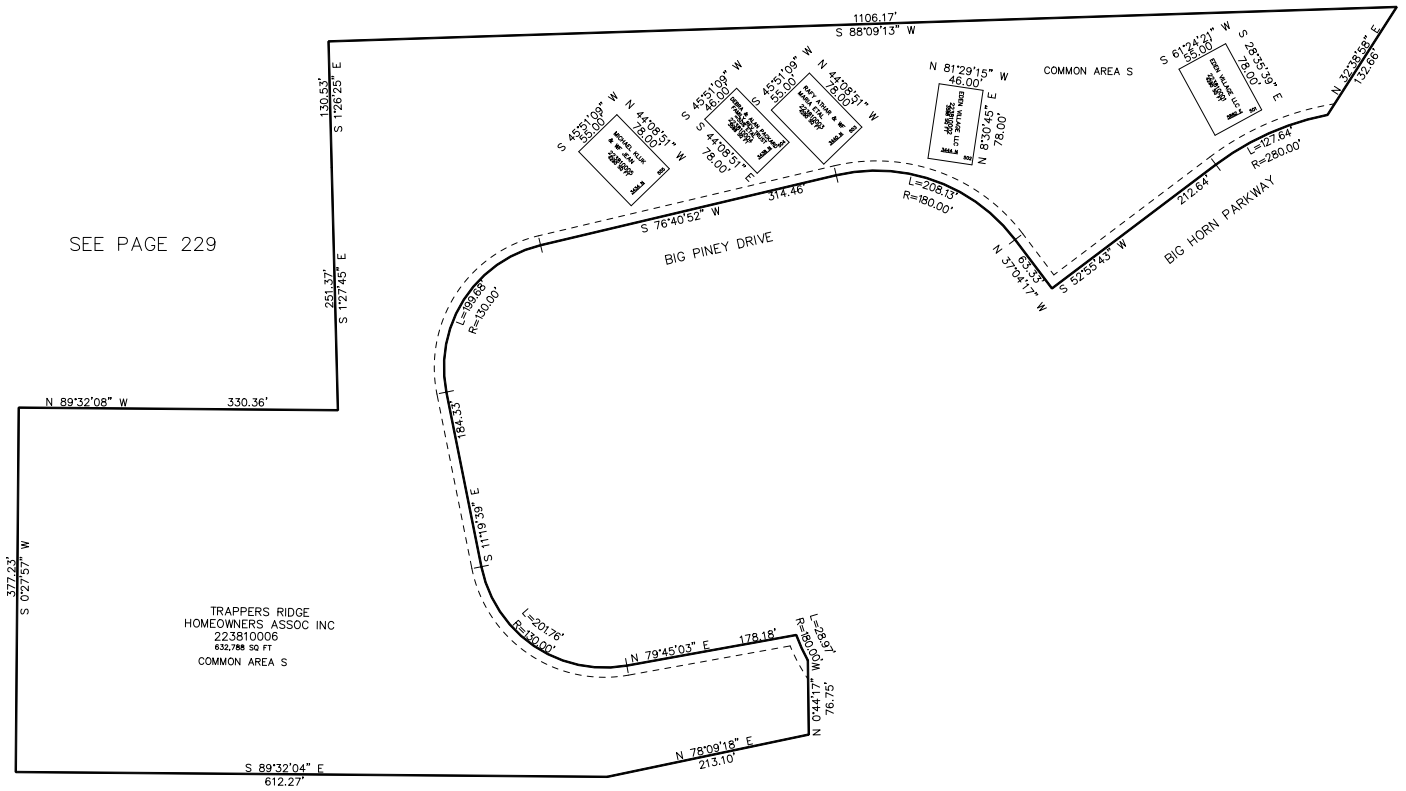
PART OF THE NW. 1/4, OF SECTION 26, T.7N., R.1E., S.L.B. & M.  
TRAPPERS RIDGE AT WOLF CREEK P.R.U.D PHASE 5 1ST AMENDMENT

IN WEBER COUNTY  
SCALE 1" = 100'

TAXING UNIT: 203

SEE PAGE 20

SEE PAGE 229



TRAPPERS RIDGE  
HOMEOWNERS ASSOC INC  
223810006  
632,788 SQ FT  
COMMON AREA S

10' UTILITY & DRAINAGE EASEMENTS EACH  
SIDE OF PROPERTY LINES AS INDICATED  
BY DASHED LINES EXCEPT AS OTHERWISE  
SHOWN.

FOR COMPLETE ENG DATA SEE  
ORIGINAL DEDICATION PLAT IN  
BOOK 88, PAGE 82 OF RECORDS.